

LIGHTBURN LASER SOFTWARE SETUP: ETHERNET CONNECTION

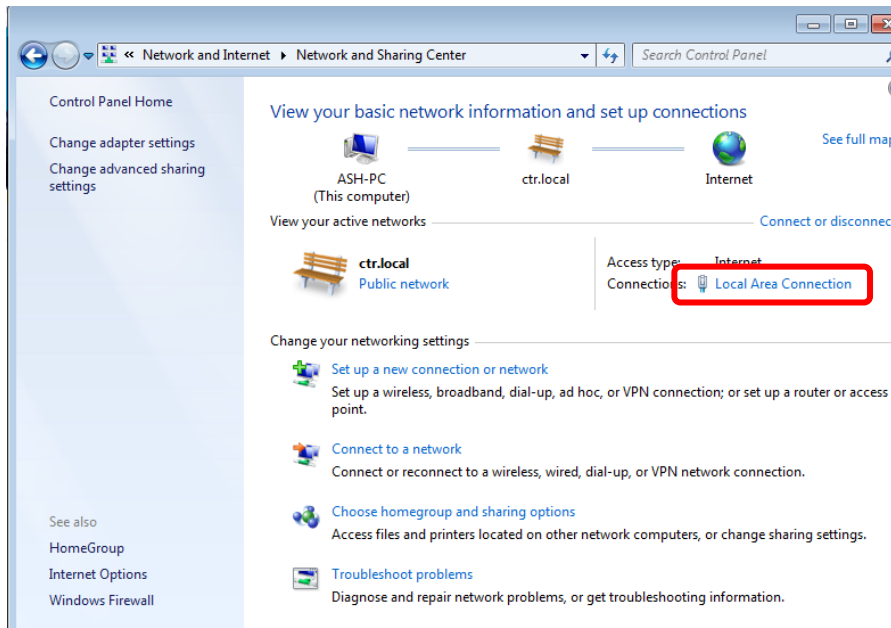
1. Connect computer

1.1. Connect the laser machine to your desktop / laptop computer via the supplied Ethernet cable.

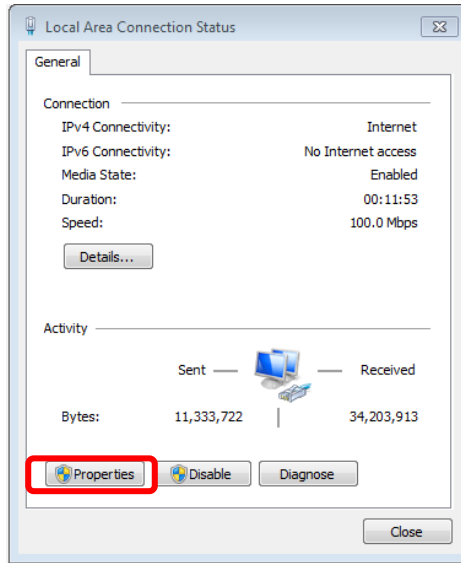


1.2. Depending on your computer operating system, either go to **Start > Control Panel > Network and Sharing Center** or carry out the equivalent steps for your operating system to open the Network and Sharing Center.

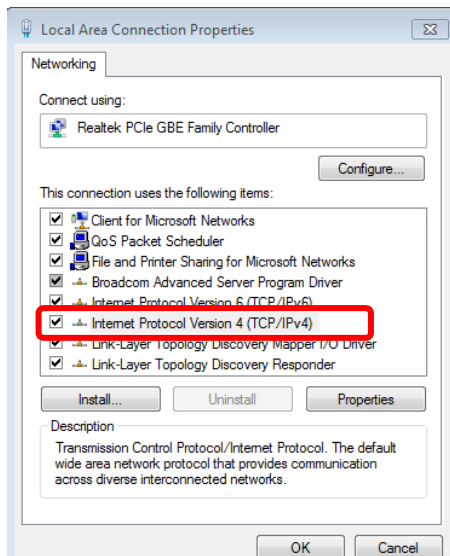
1.3. To configure the connection, click **Local Area Connection**.



1.4. Click to open the **Properties** window.

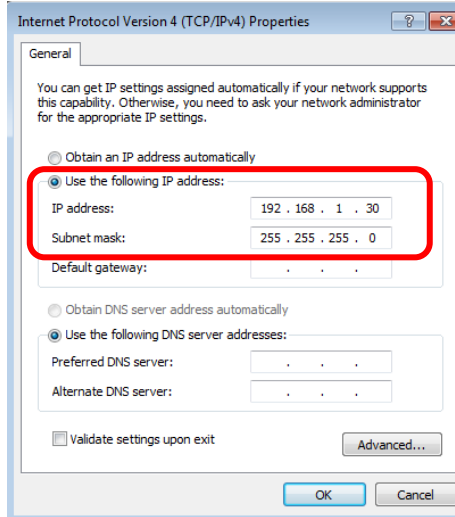


1.5. Double-click to open the **Internet Protocol Version 4 (TCP/IPv4)** window.



1.6. Select **Use the following IP address**, and set the following parameters:

- IP Address: **192.168.1.30**
- Subnet Mask: **255.255.255.0**

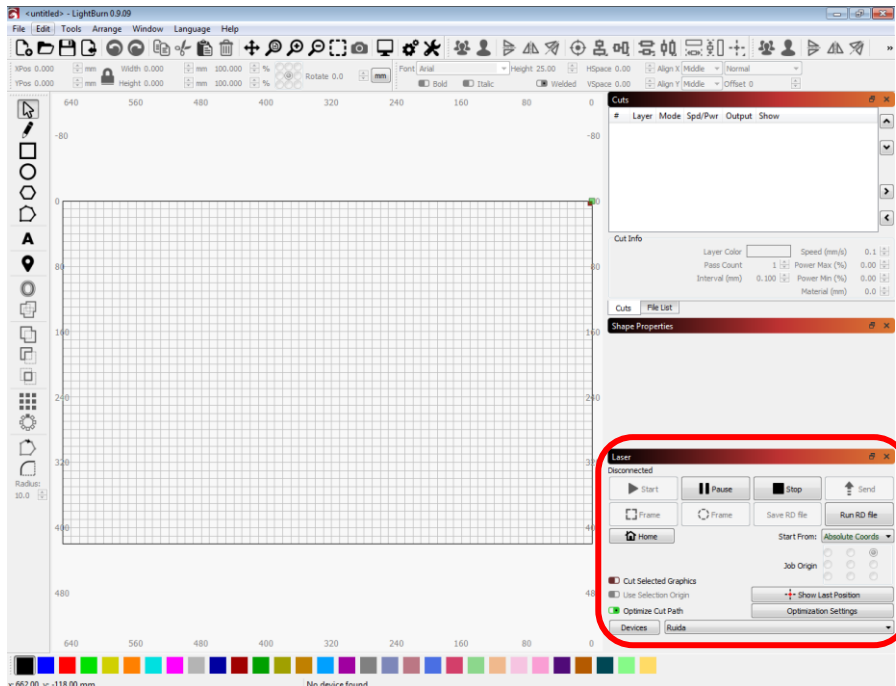


2. Configure devices within Lightburn software

You must now add and select the Web port IP address. To do this, follow the below steps.

2.1. Open the Lightburn software.

You will be looking at the area indicated below (bottom right section).

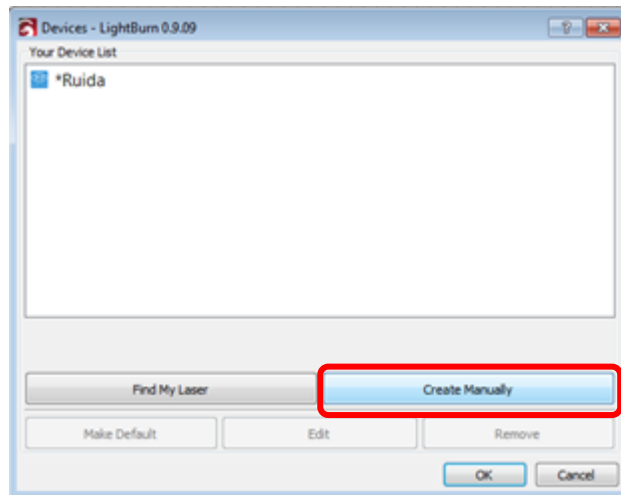


NB: please be aware that the above is the default software layout, and if this has been adjusted by yourselves, you will need to locate the relevant section and then continue with these instructions.

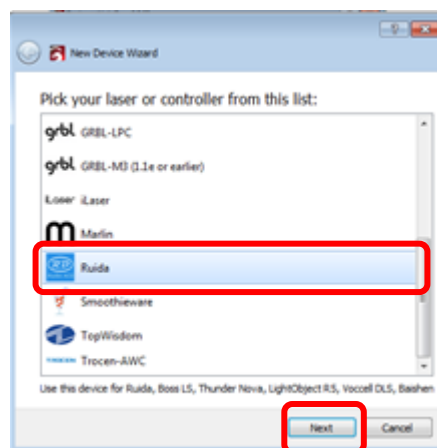
2.2. In the above indicated area of the home screen, click on **Devices**.



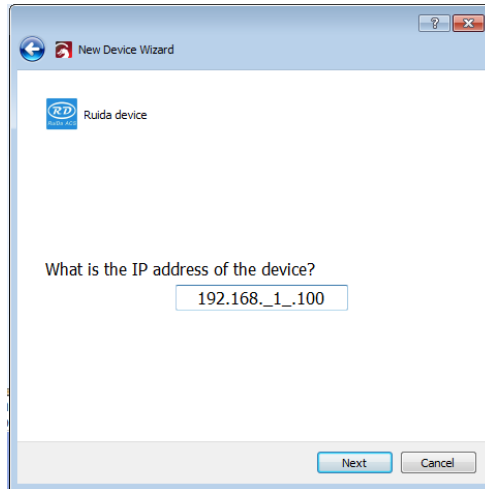
2.3. Click 'Create Manually'.



2.4. Now pick your controller type from the list (**Ruida**) and press **Next**.



2.5. Enter the IP address **192.168.1.100**

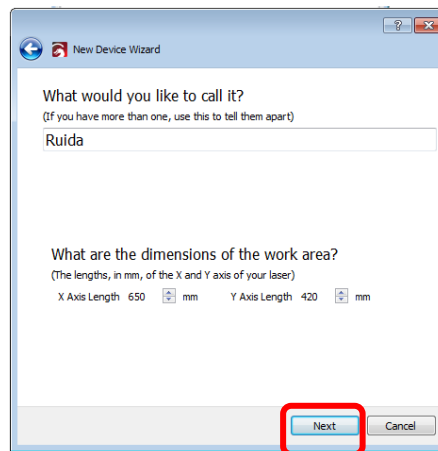


2.6. Name the device and type in both X and Y axis lengths (in mm).

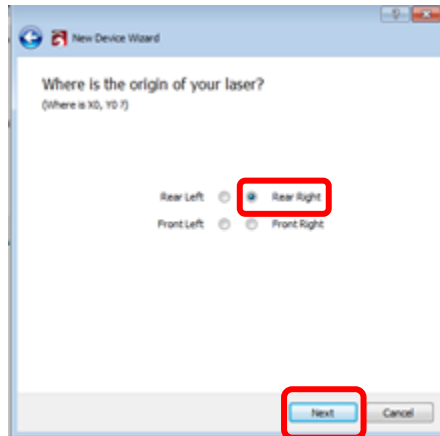
2.6.1. What would you like to call it? **Ruida1.0**

2.6.2. Contact your machine supplier if you are unsure of the dimensions for the X and Y axis, as these will vary depending on the machine you have.

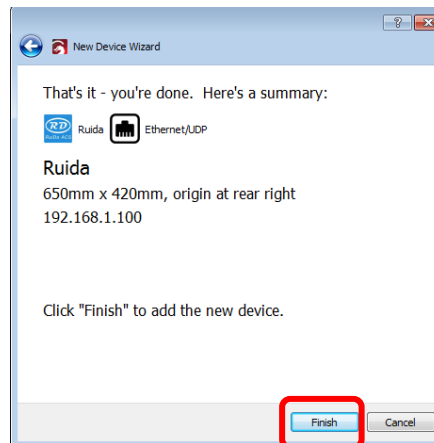
Press **Next**.



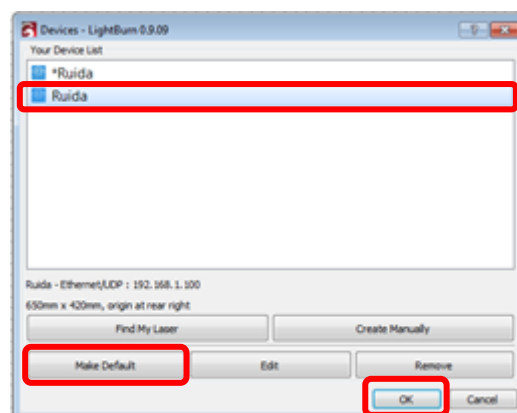
2.7. Select your origin point (**Rear Right** for CTR Lasers) and press **Next**.



2.8. A summary / completion screen will display. Press **Finish**.



2.9. You will return the below window. Select the new port name from the list. (See step 2.6.1. for reference [i.e. **Ruida1.0**]). Press **Make Default**. Press **OK**.



*****Please note Backlash / Line Shift will have to be applied to your new communication connection*****