

LIGHTBURN LASER SOFTWARE SETUP: USB CONNECTION

1. Connect computer

Connect the laser machine to your desktop / laptop computer via the supplied USB cable.

IMPORTANT: for the best connectivity, the USB cable **should NOT exceed 1.5m**

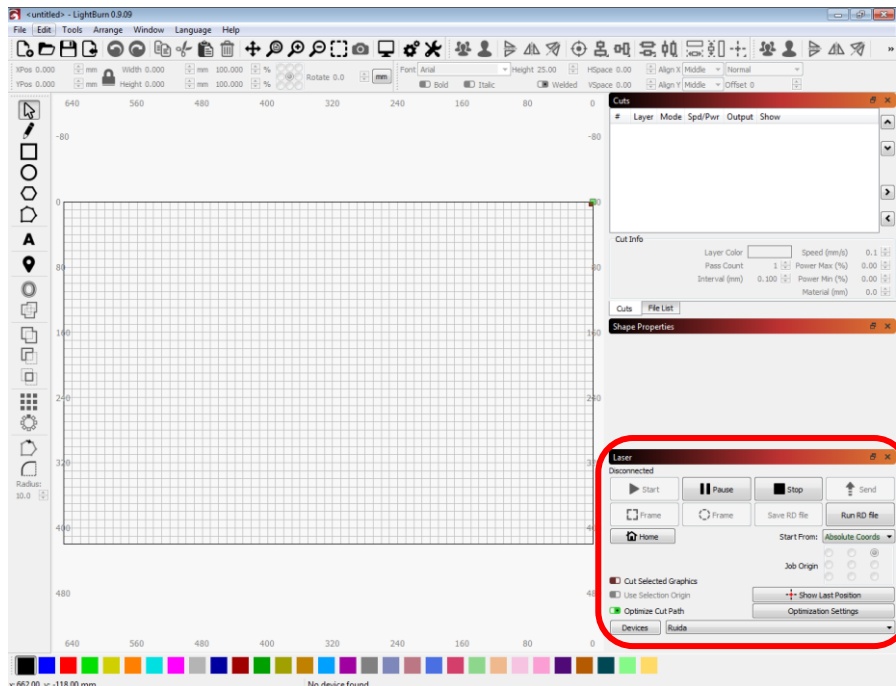


2. Configure devices within Lightburn software

To complete the USB connection of your laser machine and computer, follow the below steps in the order shown.

2.1. Open the Lightburn software.

You will be looking at the area indicated below (bottom right section).

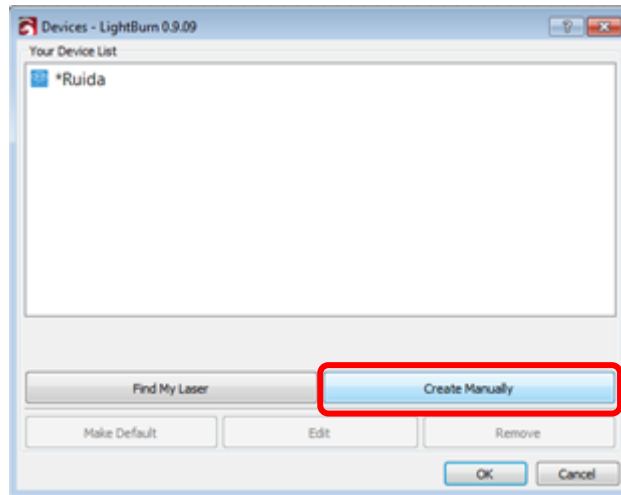


NB: please be aware that the above is the default software layout, and if this has been adjusted by yourselves, you will need to locate the relevant section and then continue with these instructions.

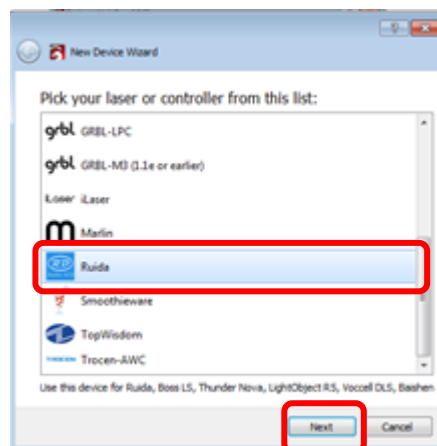
2.2. In the above indicated area of the home screen, click on **Devices**.



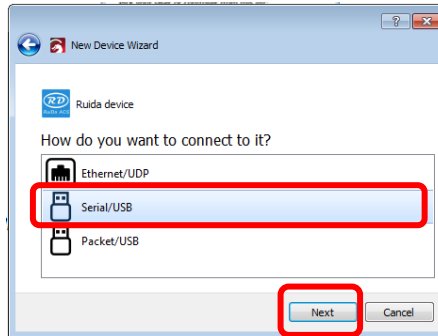
2.3. Click 'Create Manually'.



2.4. Now pick your controller type from the list (**Ruida**) and press **Next**.



2.5. Select **Serial/USB** and press **Next**.

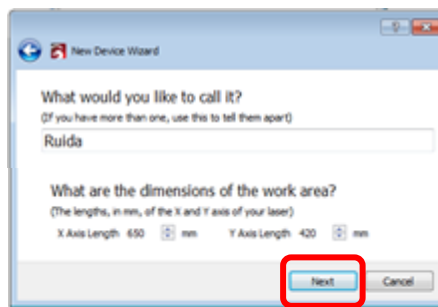


2.6. Name the device and type in both X and Y axis lengths (in mm).

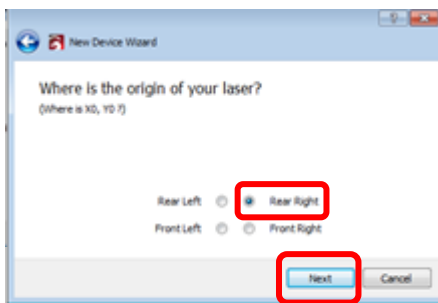
2.6.1. What would you like to call it? **Ruida1.0**

2.6.2. Contact your machine supplier if you are unsure of the dimensions for the X and Y axis, as these will vary depending on the machine you have.

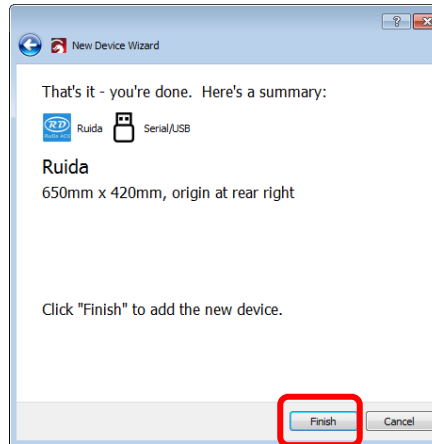
Press **Next**.



2.7. Select your origin point (**Rear Right** for CTR Lasers) and press **Next**.



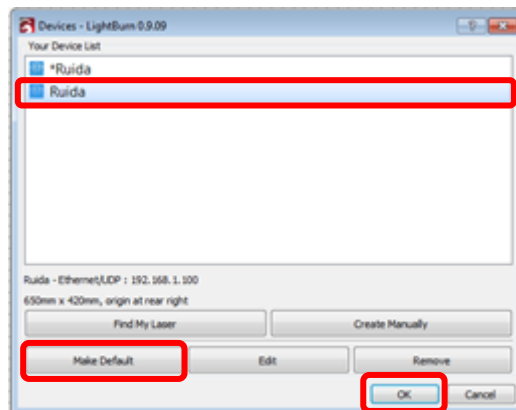
2.8. A summary / completion screen will display. Press **Finish**.



2.9. You will return the below window. Select the new port name from the list. (See step 2.5.1. for reference [i.e. **Ruida1.0**]).

Press **Make Default**.

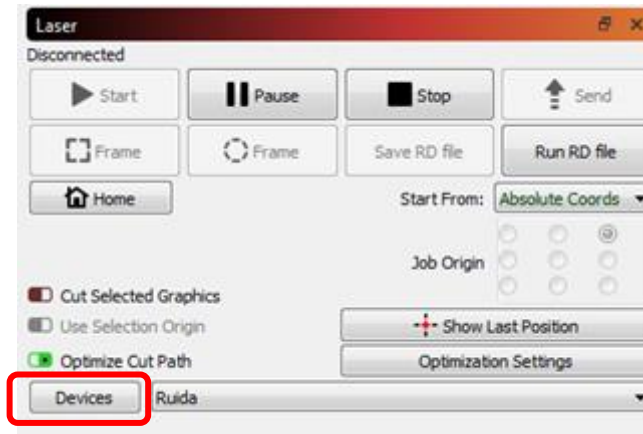
Press **OK**.



*****Please note Backlash / Line Shift will have to be applied to your new communication connection*****

NOTE: Once the laser machine has been set up via USB connection using the above steps, if the connection is ever broken, you can:

- A. Open the Lightburn software. In the bottom right area of the home screen, you will see the below section. Click on **Devices**.



- B. Click 'Find My Laser' as shown below.

